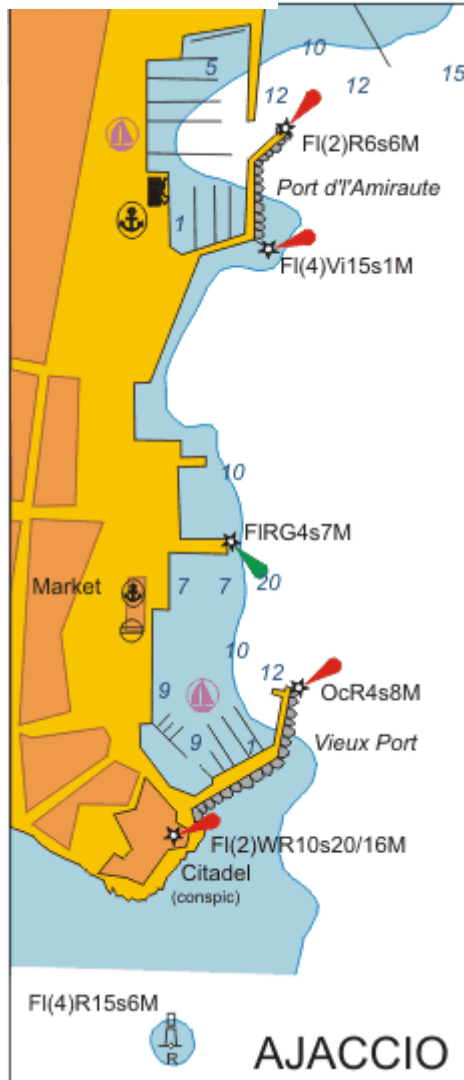


CORSICA



PORT DE PLAISANCE AJACCIO - TINO ROSSI



AJACCIO - TINO ROSSI

- 41°56,25' NORD/41°45,5' EAST
- Marine maps 6851-6942-7280
- Harbour Master – Jean Louis Colonna
- Tel +33(0)4 95 51 22 72
- Tel +33(0)4 95 51 55 43
- Fax +33(0)4 95 21 93 28
- E-mail andree.acquaviva@sudcorse.cci.fr
- VHF CHL 9
- CAPACITY – 260 of which 120 reserved for visites + 35 berths Quai d'Honneur reserved for the mega yachts.
- OPENING HOURS – In Season 07h00/21h00 out of season 08h00/12h00-14h00/18h00
- Fresh water connection
- Electricity – 220V 16A – 380V 125A
- Showers – 6
- CTTV System
- Wi-Fi access
- Petrol Station

The Port is situated in the city center. The Historical city of Ajaccio, berth place of Napoleon Bonaparte. All facilities with in walking distance.

SMALL UNITS -Max daft 2.60m Lenght 15.00m

LARGE UNITS -Max draft 6.00m max lenght 100m

APPROACH BY DAY – The Head of the Jetée de la Citadelle on NW course and round it at 25m. Check for commercial vessels.

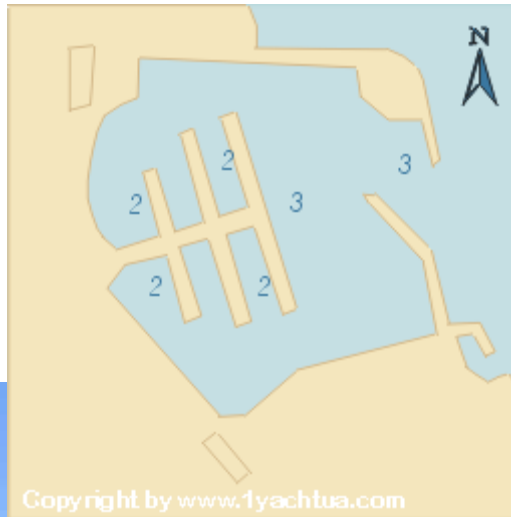
APPROACH BY NIGHT – THE FOLLOWING LIGHTS –

Iles Sanguinaires, Grand Sanguinaire, F1(3)W.15s
98m27M white square tower, black top, white building.

Cap de Muro Oc.W.4s57m9M white square tower with name in black.

WINDS – The port is protected and sheltered and can be approached under most conditions - Possibility of South and south Easterly winds with some swell.

PORT DE PLAISANCE PORTO VECCHIO



PORTO VECCHIO

- 41°35' 3 NORTH – 009°17',1 EAST
- Marine maps 1425, 1992
- Harbour Master – C H Bianconi
- Tel +33(0)4 95 70 17 93
- Fax +33(0)4 95 70 27 68
- E-mail port@porto-vecchio.fr
- VHF CHL 9
- CAPACITY – 380 of which 150 reserved for visitors + 17 berths Quai d'Honneur reserved for the mega yachts.
- OPENING HOURS – In Season 08h00/21h00 out of season 08h30/12h00-14h00/17h30
- Fresh water connection
- Electricity – 16A/63/125 A 400 V
- Showers – 18
- Petrol Station

At the head of the large and beautiful Gulf of PortoVecchio. The Marina of Porto Vecchio just below the Genoese walled town. All facilities within walking distance.

SMALL UNITS –Max draft 2.00m Length 12.00m

LARGE UNITS -Max draft 3.00m max length 20.00 - 50.00m

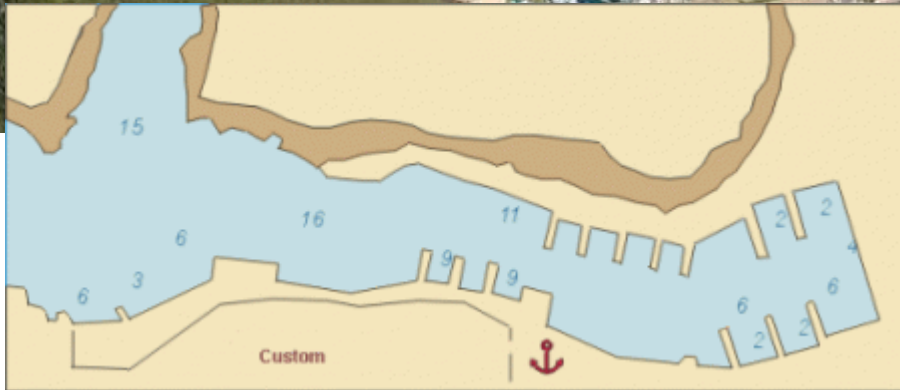
APPROACH BY DAY – Pass 2 lighthouses, a Chiappa and St-Cyprien to starboard where there's also a rock(Pecorella) with a turret.

APPROACH BY NIGHT – THE FOLLOWING LIGHTS –
Isola Razzoli. FI.WR.5s77m13/9M Truncated conical tower 022°-W-092.5°-w-237°-R-320°

Isola Santa Maria FI(4)W.20s17m10M Tower on white 2 storey house. 173°-vis- 016°.

WINDS – The port is protected and sheltered and can be approached under most conditions, offering complete shelter in the Harbour.

PORT DE PLAISANCE BONIFACIO



BONIFACIO

- 41°23',4 NORD – 009°09,8 EAST
- Marine maps 1213, 1424
- Harbour Master – C H Bianconi
- Tel +33(0)4 95 73 10 07
- Tel +33(0)4 95 73 19 60
- Fax +33(0)4 95 73 18 73
- E-mail port.bonifacio@wanadoo.fr

- VHF CHL 9
- CAPACITY – 450 of which 250 reserved for visitors. 30 berths for yachts up to 30m - 15 berths for yachts 35-50m - 2 berths for yachts 75m.
- OPENING HOURS – In Season 08h00/21h00
out of season 08h30/12h00-14h00/17h30
- Fresh water connection
- Electricity – 380V -125A
- Showers – 5
- Petrol Station

This commercial, fishing and yachting harbour is certainly the most spectacular and attractive natural harbour in Corsica. The narrow, deep, fjord inlet with high sides of chalk rocks crowned by a medieval walled town is unique. All facilities within walking distance.

SMALL UNITS –Max draft 5.00m - max Length 15.00m

LARGE UNITS -Max draft 5.00m - max length
30.00/35.00m/50.00m/75.00m

APPROACH BY DAY – Enter on a NE course, leaving the Pointe de la Madonetta with a red square lighthouse tower on its top 100m to port, Pointe du Timon 100m to starboard.

APPROACH BY NIGHT – THE FOLLOWING LIGHTS –

Pointe de Senetosa –F1.Wr.5s54m20/16M.

Ecueil Les Moies Q(6)+LF1.W.15s26m9M.

Cap de Fenodir F1(4)15s21m21M.

Cap Pertusato F1(2)W10s100m25M.

Iles lavezzi Oc(2)WRG.6s27m15/11M

WINDS – The port is protected and sheltered and can be approached under all conditions, difficulty W-NW 7 to 9. Complete shelter in the Harbour.

PORT DE PLAISANCE PROPRIANO



PROPRIANO

- 41°40',63 NORD – 8°54,32 EAST
- Marine map 1424
- Harbour Master – Michele Philippe
- Tel +33(0)4 95 76 10 40
- Fax +33(0)4 95 70 26 72
- E-mail yachtclub.valinco@wanadoo.fr
- VHF CHL 9
- CAPACITY – 380 of which 50 reserved for visitors.
5 berths for yachts up to 30m/35m - 2 berths for yachts 55m.
- OPENING HOURS – In Season 08h00/21h00 out of season 09h00/12h00-14h00/18h00
- Fresh water connection
- Electricity – 220V 16A – 380V 125A
- Showers – 24
- Petrol Station

A commercial, fishing and yachting harbour in attractive surroundings near the head of the deep Golfe de Valinco. All facilities within walking distance.

SMALL UNITS –Max draft 2.00m - max Length 18.00m

LARGE UNITS -Max draft 4.00m - max length 55.00m

APPROACH BY DAY – Enter on N course, round Cap Muro, passing 2 headlands Cap Nero and Pointe de Porto Pollo.

APPROACH BY NIGHT – THE FOLLOWING LIGHTS –

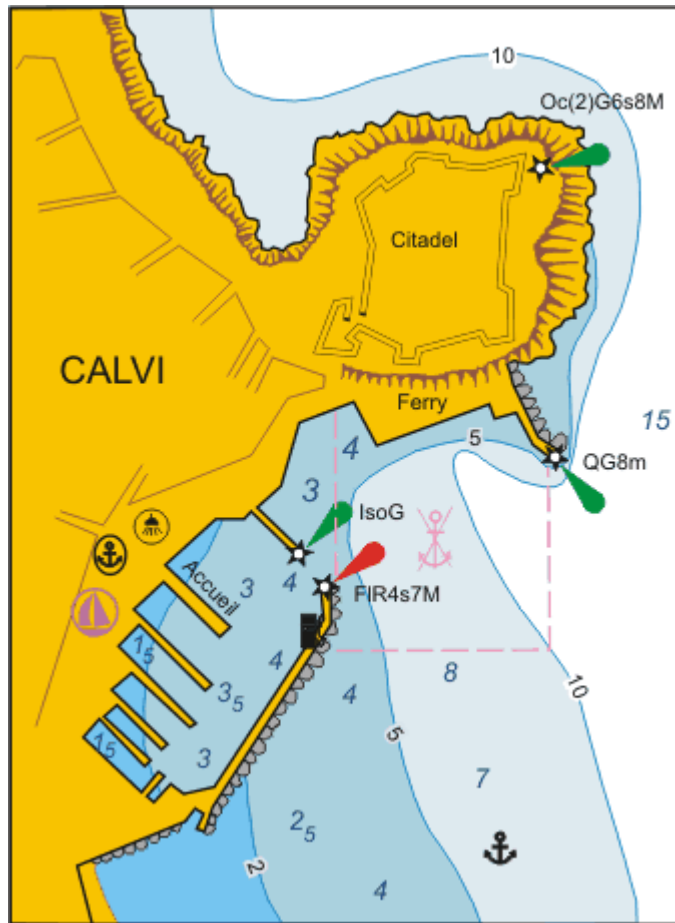
Cap Muro Oc.W.4s57m9M-White square tower, black top with name in black.

Pointe de Senetosa(Pointe Aquila) F1.WR.5s54m
20/16M – Two white towers, black tops.

WINDS – The port offers good protection, swell can be unpleasant if there are strong SW-W –NW, winds.



PORT DE PLAISANCE CALVI



CALVI

- 42°34,1' NORD – 8°45,8' EAST
- Marine map 1425
- Harbour Master – Bernard Mariani
- Tel +33(0)4 95 6510 60
- Fax +33(0)4 95 65 15 13
- E-mail port-calvi@wanadoo.fr
- VHF CHL 9
- CAPACITY – 500 of which 180 reserved for visitors. 30 berths for yachts from 30m - 75m.
- OPENING HOURS – In Season 07h00/21h00 out of season 08h30/12h00-14h00/17h00
- Fresh water connection
- Electricity – 220V-380V
- Showers – 10
- Petrol Station

One of the most beautiful harbours on the island. The citadelle and the town are very picturesque. All facilities within walking distance.

SMALL UNITS –Max draft 1.50m/3.00m - max Length 18.00m

LARGE UNITS -Max draft 4.00m - max length 30.00/35.00m/50.00m/75.00m

APPROACH BY DAY – From N the lighthouse Pointe Revellata. from S signal station at Cap Cavallo.

APPROACH BY NIGHT – THE FOLLOWING LIGHTS –

Ile di Gargalu F1.WR.4s37m8/5M. White column, black top.

Ile Rousse F1(3)WG.12s64m15/11M. white square tower.

WINDS – The port is protected and sheltered and can be approached under almost any conditions, difficulty NW-N-NE. Complete shelter in the Harbour. swell NE gales.



PORT DE PLAISANCE BASTIA



BASTIA

- **42°41,6' NORD – 8°27.3' EAST**
- **Marine map 1425, 1999**
- **Harbour Master – Michele Borchia**
- **Tel +33(0)4 95 31 31 10**
- **Fax +33(0)4 95 31 77 95**
- **E-mail vieuxport@ville-bastia.fr**

- **VHF CHL 9**
- **CAPACITY – 270 of which 30 reserved for visitors.**
- **OPENING HOURS – In Season 08h00-12h00/14h00-20h00**
- **Fresh water connection**
- **Electricity – 220V-**
- **Showers – 6**
- **Petrol station**

The old fishing harbour 'Le Vieux Port' at the south end of the old town of Bastia.

SMALL UNITS –Max draft 3.80m - max Length 18.00m

LARGE UNITS -Max draft 3.80m - max length 3 units of 30.00. 1 unit 40m

APPROACH BY DAY – The harbour is north of the citadelle, a red and white TV tower on Pigno. Entrance on a W-SW course and the head of the Mole Genoio to starboard.

APPROACH BY NIGHT – THE FOLLOWING LIGHTS –

Cap Corse. Ile de Giraglia F1.W.5s85m28M white tower, black top

Macinaggio. Jetee Est head Oc(2)WR.6s10m12/9M white tower, red top

Radio tower F.Rs,2.45M to west of Bastia

Alistro f1(2)W.10s93m22M Grey tower, red house, black lantern

WINDS – The port is protected and sheltered and can be approached under almost any conditions, difficulty NE-E and SW libeccio. Complete shelter in the Harbour, swell NE -E gales.